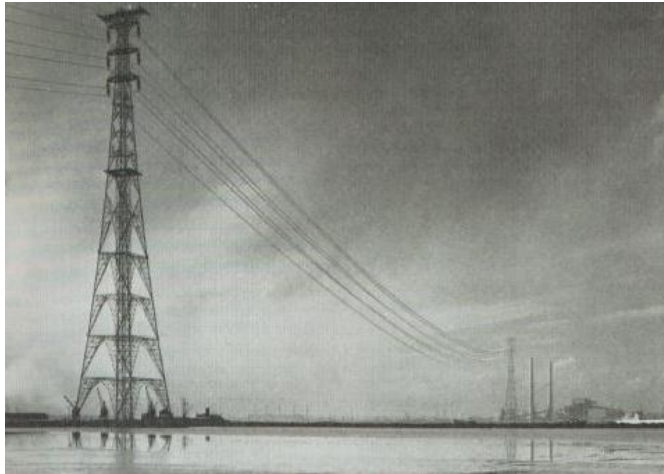


Spotters' Guide to Pylons - River Crossings

Issue 1



Where power lines need to cross water, a different design of pylon is needed. They have huge height extension to give them the ability to span the river with the wires.

The photograph above shows the Thames crossing at Thurrock. These are the two tallest pylons in the UK, at 630 feet (192 metres) high they are even taller than the Post Office Tower. They can be seen clearly from the Queen Elizabeth II motorway bridge, and the surrounding area.

You may also see squat shaped pylons helping to take the strain of the wires as they lead up to the river crossing itself. One of these strainers is shown opposite.

Here are some more specific pairs of pylons for you to spot.

	<p>The Avon crossing at Avonmouth, near Bristol. Viewed from the bridge on the M5.</p>	<p>Notes:</p>
	<p>A strainer near the Forth crossing at Kincardine, Fife. The crossing's cables carry 380kV.</p>	<p>Notes:</p>
	<p>One of the Severn crossings, a pylon on the south side.</p>	<p>Notes:</p>
	<p>A pylon supporting cables as they cross the Great Ouse.</p>	<p>Notes:</p>